

Digital Adjudication for Thespys

A quick guide to
filming and
uploading your
Thespy entry!



SOCIAL DISTANCING POLICY

Participants submitting a collaborative entry (group/duet entries) are expected to follow masking and social distancing rules and recommendations while rehearsing and producing their final submission video.

Students may only film together if they are current members of the same household. Duet and Group performers may choose to record their pieces separately and edit them together into a single video.



FIND AN EFFECTIVE FILMING LOCATION



Area should be quiet so we can hear both you and your track (if applicable).

Make sure you are lit enough to be clearly visible.

Dress neatly, in all black clothing as written in the guidelines. No costumes.

DO



Film in front of a non-distracting background. If possible, choose a solid-color wall or consider hanging a sheet behind you.

DON'T



The color should contrast with your clothing. Since all entrants are required to wear black clothing - please avoid taping in front of a black wall or sheet.



SOUND AND LIGHTING

Before filming, conduct a full-volume test to make sure you can be heard (and that your track can be heard).

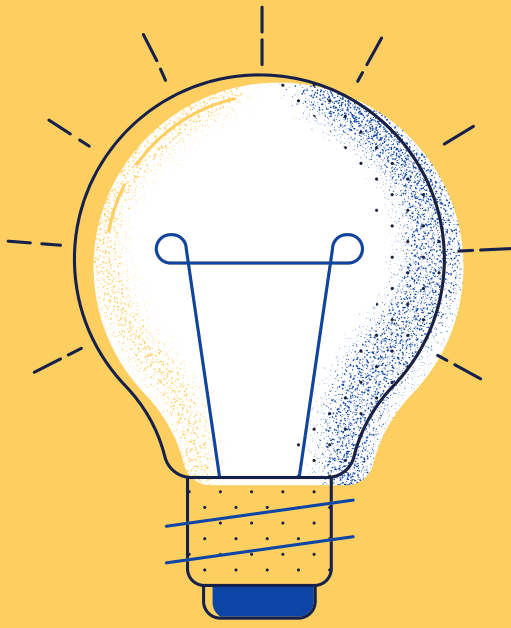
Make the best use of windows. If you're filming with natural light, don't film while standing in front of windows as you'll appear as a silhouette on camera.



CAMERA POSITIONS

Ensure your blocking is effective and visible when filmed. Consider whether to decrease your movement or to adjust your camera angle.

Shoot your video horizontally, not vertically



TIPS FOR DIGITAL PORTFOLIO SUBMISSIONS

You will be asked to share your portfolio as you would for an in-person presentation. Please upload the material asked for in the submission form in accordance with the program guidelines.

Each of your samples should be clear and quality – good production or process photos, or easily readable documents.

Uploads should be well-photographed or clearly readable. Though you will be able to expand in your video presentation, the sample should be able to speak for itself to a certain extent.