

Yes, this is the Varsity program for April 23, 2022.

But first some important words from our sponsors:

EVENT 6, MODERN SHAKESPEARE, STUDENT ORIGINAL:

- Using profanity risks Disqualification (being DQ'd).
- Find a euphemism for each swear word.

TECH, ALL EVENTS:

- Any students using audio visual as part of their tech presentation must provide everything needed for judges to view.
- No recorded music allowed.

SCORING

- If there are ties in the finals rooms, Tabulations checks your earlier scores.
- Deliver a great performance every time.
- **You'll have different judges to impress in every round.**

SURVIVAL

- Keep sipping water all day.
- Don't be the person who can't perform in finals because you've collapsed from dehydration. **It. Has. Happened.**

SCHOOL CODE TAGS

- Get them from your teacher after they sign in.
- Wear them all day.
- if you lose yours, get a replacement in Tabulations.

HEALTH

- First Aid is in **room 601**.
- **If you can't walk there**, have a room chair or an adult text the problem & your location, or send someone to 601 with that information.

SEMI-FINALS

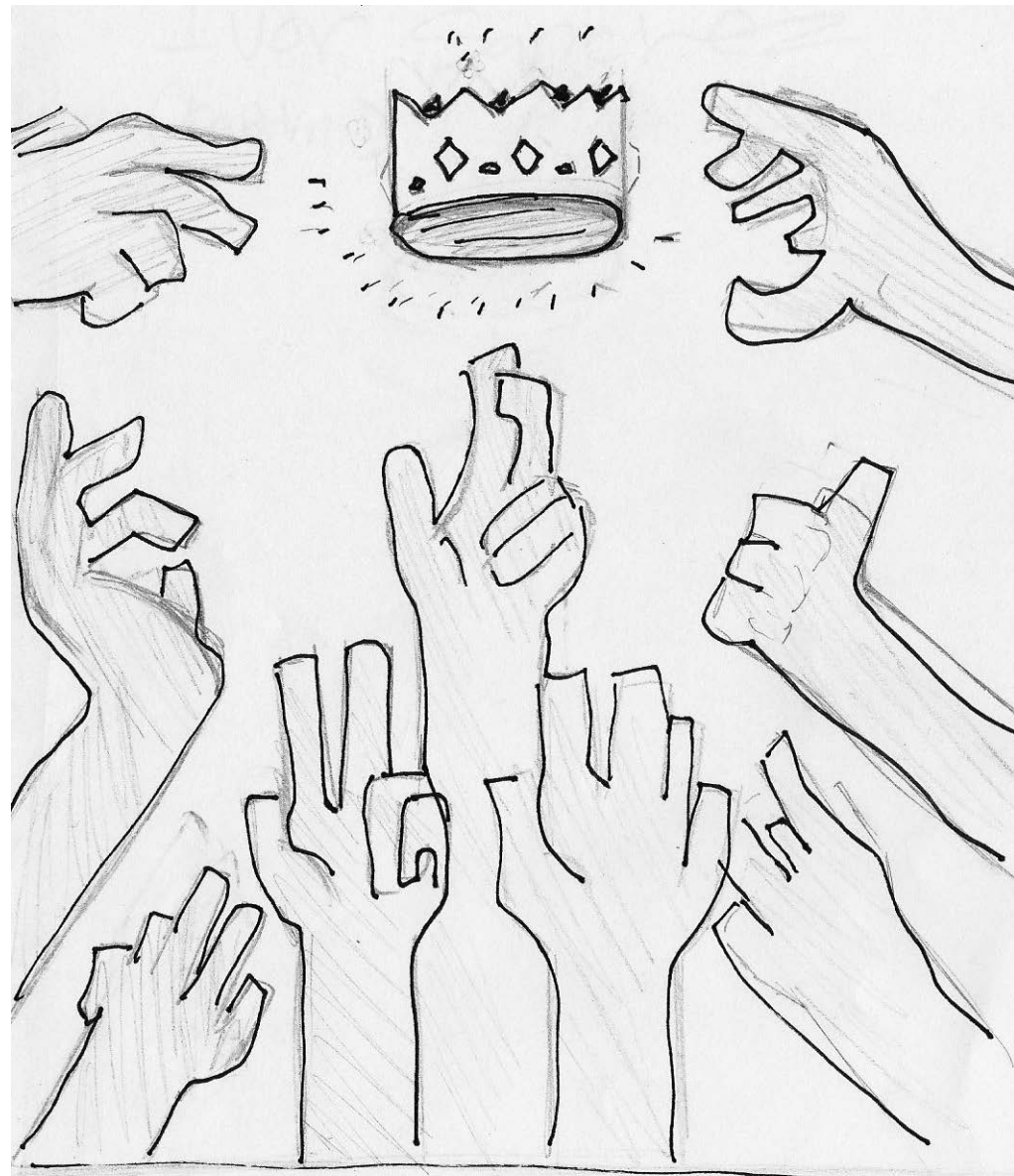
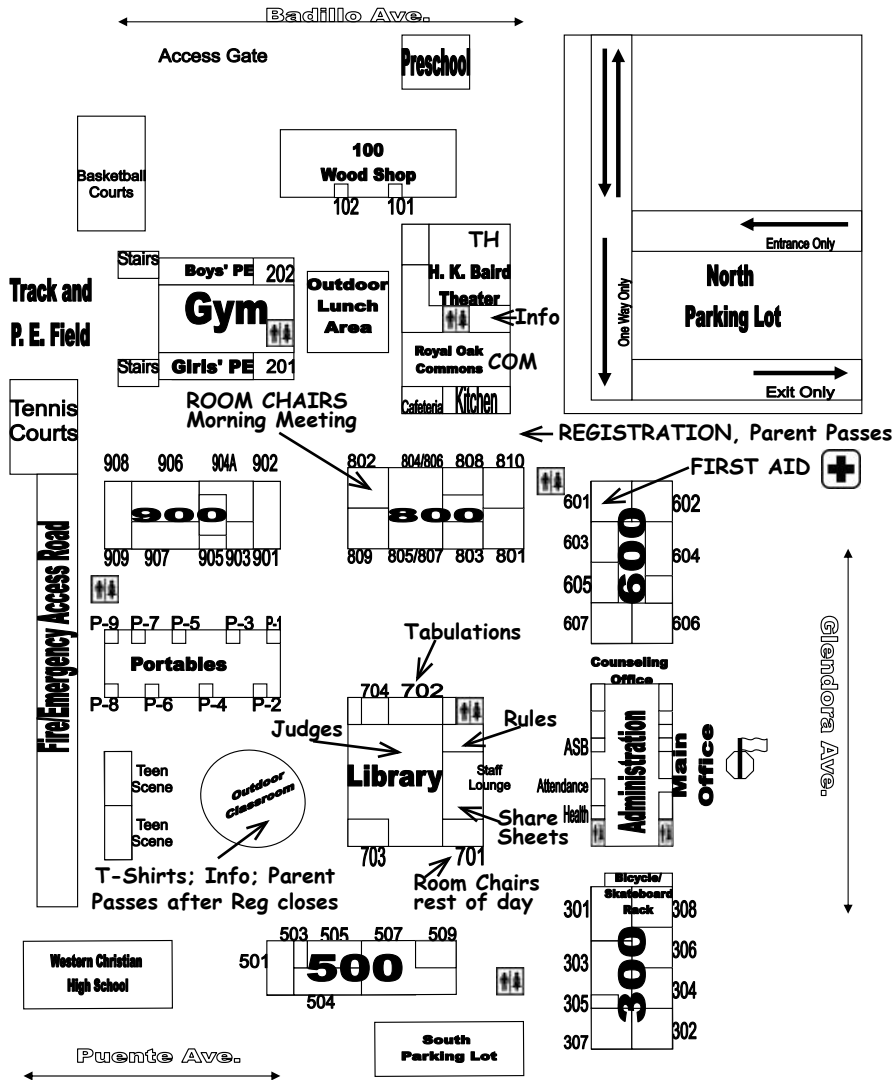
- If you don't see your school code on the list for your event, **come to Tabulations right away**.

PROGRAMS

- Printed programs are \$1.
- If you can't borrow a program to check what room you're in, go to the T-shirt table or Tabulations.

And now to our program (which does NOT fold into a booklet) ...

Royal Oak Middle School Campus



DTASC
SHAKESPEARE
2022

Participating Schools and Coaches

Arcadia High School..... Steven Volpe	Los Angeles High School of the ArtsBernard Addison
Bell High School.....Andrea Whitney	Marshall High School.....Adam Brock
Calabasas High School..... Bill Garrett	Marymount High School..Corey Wexler
Carson HS.....Jolly Rodriguez	Nordhoff High SchoolJohn Hoj
Cleveland CHS Benett Berkowitz	Oak Hills High School.....Paula Hunter
Crescenta Valley HS.....Kristin Maitlen	Palisades CHS Cheri Smith
Crossroads School for Arts and Sciences.....Zoey Zimmerman	PV Peninsula HS..... Seth Cohen
Culver City High SchoolLee Hanson	Santa Monica HS.....Kate Barraza
Downey HS..... Christopher Nelson	Valencia HS - Valencia. Stephen Whelan
HArts AcademyJennifer Broadbent	Western Center Academy .. Joshua Brady
Henry J. Kaiser HS Wendi Johnson	WISH Academy HS Janet Landon

Royal Oak
Middle School
welcomes
everyone
to the
LIVE
DTASC
Shakespeare
Festival
2022



102nd Annual DTASC Shakespeare Festival

Royal Oak Middle School
303 Glendora Avenue • Covina, CA 91724 • (626) 967-6354

Schedule

7:30 A.M.	Registration — between 701 & Gym
8:00 A.M.	Room Chairs meeting — Room 802 <i>All Room Chairs report to Room 802 as soon as they arrive</i>
8:45 A.M.	Opening Assembly — Gym
9:00 A.M.	Round 1
10:30 A.M.	Round 2
11:45 P.M.	Lunch
1:00 P.M.	Announce Semi-Finals for Varsity — Gym
1:15 P.M.	Semi-Final Round for Varsity
3:15 P.M.	Announce Finals for Varsity — Gym
3:30 P.M.	Finals Round for Varsity
5:15 P.M.	Awards Assembly for Varsity Division— Gym (ends about 8:15 P.M.)

Headquarters

Registration.....	Lunch Area
Judges & Hospitality.....	Library
Tabulations.....	702
Rules.....	Staff Lounge (Door 1)
Share Sheets	Staff Lounge (Door 2)
Room Chairs	802 meeting; then 701
Parent Passes	Registration Table; after Round 1 starts, at T-Shirt Table
Judges' Luncheon	Library
Student Lunches.....	Lunch Area
T-Shirts/Info	Outdoor Classroom
First Aid	601
Host School Personnel	201

Events

S1. Set Design.....	3
S2. Light Design	4
S3. Graphics/Publicity	5
S4. Character Costumes.....	6
S5. World Court Costumes	7
3. Audition Monologue	9
4. Open History (Straight Scene)	12
5. Open Tragedy	13
6. Shakespeare Today (Stu.Written)....	14
7. "Romeo and Juliet"	15
8. "A Midsummer Night's Dream"	18
9. Bowie and Shakespeare	19
Scholarship Information	13

DTASC Officers

PresidentSeth Cohen
 Executive Vice PresidentBill Garrett
 Varsity Vice PresidentStephen Whelan
 MS/JV Vice President .Lindsey Hamby-Real
 Recording SecretaryArt Miller
 TreasurerLynn Lanning
 Varsity Registrar . Estella Owoimaha-Church
 MS/JV Registrar Christopher Nelson
 Membership SecretaryJoshua Brady
 Advocacy Coordinator Gai Jones
 Parliamentarian Yvette Bishop
 DEIB Officers.....Bernard Addison,
 Estella Owoimaha-Church
 CETO Liaison..... Alison Johnson
 Historian..... Marcia Barryte
 100th Anniversary Gala..... Roger Graziani
 Web Manager.....David Levy
 Social Media Liaison Nicole Pedroche
 Social Committee Chair ...Barbara Zatarain
 President Ex Officio Susan Eiden

DTASC Committee Chairs

Festival Host Nicole Pedroche
 Judges..... Susan Eiden
 Tabulations.....Scott Hunter
 Rules Cheri Smith, Monique Smith
 Room Chairs.....Paula Hunter
 Programs Lynn Lanning
 Judges' Lunches Royal Oak MS
 Hospitality..... Royal Oak MS
 T-Shirt Coordinator Stephen Whelan
 Registration Yvette Bishop
 Organizational Meeting ..Royal Oak MS
 Pre/Post Festival JudgesGai Jones
 Publicity Royal Oak MS
 Troubleshooters..... Seth Cohen
 Campus Cleanup All Schools

Acknowledgements

SuperintendentDr. Jeffery Jordan
 Assistant Superintendent Dr. Danny Kim
 PrincipalMr. Alex Senar
 Assistant Principal Mrs. Judy Ledon
 Parent Coordinators.....Ms. Wendy Parker
 & Mrs. Melissa Harms

DTASC expresses its gratitude to the faculty, staff, parents and students of Royal Oak Middle School for their cooperation and valuable services on behalf of the 102nd annual Shakespeare Drama Festival.

Cover DesignKaitlin Sanchez,
 Carson HS
 Program Design
 & Extra Ads Lynn Lanning
 Program Printing..... Calabasas Printing

FYI: Some DTASC Rules

- The selection is to be memorized.
- No recording or photographing of scenes in any round is allowed. Doing so may violate copyright and student privacy laws.
- Sound effects are permissible, but only through the use of a participant's hands, feet, mouth, or chairs.
 - Students may vocalize background music without lyrics.
 - If a non-musical play includes a song, students may then sing lyrics.
- Any **suggestive acting** that denotes sexual activity of any kind except kissing and embracing is strictly forbidden in festival scenes and will result in disqualification.
 - No kissing with tongues permitted.
 - For Middle School, kissing on the mouth is not permitted.
 - For Junior Varsity, only a quick non-sexual kiss on the mouth is permitted.
- The playwright's lines must be used.
- Individual words or phrases may not be combined at random to create new lines.
- Pronouns may be changed as needed.
- The playwright's intended tone must be preserved in all scenes unless specifically designated as a parody.

Event S1 ~ Tech Theatre ~ Set Design

IMPORTANT: ALL entries for Set Design, Light Design, and Graphics/ Publicity go to room 307 immediately after opening assembly.

SET DESIGN – Room 301

Featured plays are *Romeo and Juliet* and *A Midsummer Night's Dream*. Summaries on pp 14–15.

Varsity Division

School Code	Room	(Order)
CDF S1	301	1
CRA S1	301	2
CRW S1	301	3
CPK S1	301	4
CDA S1	301	5
CFM S1	301	6
CEA S1	301	7
CZN S1	301	8
CTY S1	301	9
CHF S1	301	10

Varsity Division Rules for SET DESIGN

- 8 minute limit; 1–4 participants.
 Must be for one of the featured Shakespeare plays.
 Must have all these:
- Concept and Inspiration Board with required information about play, research, time period, setting, and reasons for choices.
 - One set model, using 1/2" scale, either a physical set model or a virtual rendering, all in color.
 - Set Construction info, including detailed list of materials, theoretical budget, and overhead ground plan using 1/4" scale.
 - If physical set model, must have list of actual expenditures, not to exceed \$100.
 - If Virtual Set model, must have a set of Front Elevations, in color, using either 1/2" or 1/4" scale.
 - Set Dressing: furniture, foliage, practical choices, ease of staging.
 - Must explain concept, choices, materials, knowledge of play.
 - Must include final design images.

NOTE TO VARSITY JUDGES: If required elements are missing in any section, please lower the score accordingly for that section.

**DTASC
 HOPES
 EVERYONE HAS A
 WONDERFUL TIME
 AT THE
 SHAKESPEARE
 FESTIVAL!
 IT'S GREAT TO BE
 LIVE
 AGAIN!**

Event S-2 ~ Tech Theatre ~ Light Design

IMPORTANT: ALL entries for Set Design, Light Design, and Graphics/Publicity go to room 307 immediately after opening assembly.

LIGHT DESIGN – Room 303

Featured plays are *Romeo and Juliet* and *A Midsummer Night's Dream*. Summaries on pp 14–15.

Varsity Division

School Code Room (Order)

CTY S2	303	1
CHF S2	303	2
CZN S2	303	3
CEA S2	303	4
CRW S2	303	5
CPK S2	303	6
CEF S2	303	7

Varsity Division RULES for LIGHT DESIGN

8 minute limit; 1–4 participants.

Must be for one of the featured Shakespeare plays.

Must have all these:

- Concept and Inspiration Board with required information about play, research, time period, setting, and reasons for choices.
- A story summary of the scenes.
- A lighting design.
- A set design GROUND PLAN, using 1/2" scale.
- Sketches/drawings/renderings showing the light design's effect.
- A Light Cue Sheet for one scene of section of the play, with 5-10 light cues in the sequence.
- An Instrument Schedule with a key for all instruments used, dimmer, channel number, color & patterns or accessories.
- Must explain concept, choices, materials, knowledge of play.
- Must include final design images.

NOTE TO VARSITY JUDGES: If required elements are missing in any section, please lower the score accordingly for that section.



**Congrats to
all theater students
for their dedication
in rehearsals
and their designs
throughout the year!!**

Event S-3 ~ Tech Theatre ~ Graphics/Publicity

IMPORTANT: ALL entries for Set Design, Light Design, and Graphics/Publicity go to room 307 immediately after opening assembly.

GRAPHICS/PUBLICITY – Room 307

Featured plays are *Romeo and Juliet* and *A Midsummer Night's Dream*. Summaries on pp 14–15.

Varsity Division

School Code Room (Order)

CEA S3	307	1
CTY S3	307	2
CNC S3	307	3
CFM S3	307	4
CDF S3	307	5
CPK S3	307	6
CZN S3	307	7
CHF S3	307	8
CHA S3	307	9
CRW S3	307	10

Varsity Division RULES for GRAPHICS/PUBLICITY

8 minute limit; 1–4 participants.

Must be for one of the featured Shakespeare plays.

Must have all these:

- Concept and Inspiration Board with required information about play, research, time period, setting, and reasons for choices.
- Marketing Plan with 1-3 ideas for publicizing the show, plus target audience, time frame, and theoretical budget of \$1,000.
- Actual expenditures cannot exceed \$100. Expenditure report required.
- Poster OR flyer design, how research affected it; design, practical and artistic choices with reasons.
- Poster or flyer must be practical, professional, and original. It cannot be based on any marketing materials known to be used for the play.
- Program with 4-6 pages.
 - ▷ Cover & title page include logo/image, author, title, fake school name & location, supposed date of performance(s).
 - ▷ Include scene breakdown, cast & crew roles & names, and enough other related items to fill the pages comfortably.
 - ▷ No blank areas allowed for autographs.
- Must explain concept, choices, materials, knowledge of play.
- Must include final design images.

NOTE TO VARSITY JUDGES: If required elements are missing in any section, please lower the score accordingly for that section.



Event S4 ~ Tech Theatre ~ Character Costumes

IMPORTANT: ALL entries for Character Costumes and World Court Costumes go to room 306 immediately after opening assembly.

**CHARACTER COSTUMES –
Room 306**

Featured plays are *Romeo and Juliet* and *A Midsummer Night's Dream*. Summaries on pp 14–15.

Varsity Division

School Code	Room	(Order)
CRA S4	306	1
CPK S4	306	2
CEA S4	306	3
CDF S4	306	4
CZN S4	306	5
CFM S4	306	6
CLA S4	306	7
CTY S4	306	8
CRW S4	306	9
CHF S4	306	10
CNC S4	306	11
CHA S4	306	12

NOTE TO VARSITY JUDGES: If required elements are missing in any section, please lower the score accordingly for that section.

VARSITY DIVISION RULES for CHARACTER COSTUMES

- 8 minute limit; 1–4 participants.
Must be for one of the featured Shakespeare plays.
Must have all these:
- Concept and Inspiration Board with required information about play, research, time period, setting, and reasons for choices.
 - EITHER CHOICE 1:
 - ▷ 1 fully built costume and 3 color costume renderings, including the fully built one.
 - ▷ Expenditures report for the full realized costume. Expenses not to exceed \$100.
 - OR CHOICE 2:
 - ▷ 5 color costume renderings.
 - Each costume design is identified by play title, character name, act and scene.
 - Costume designs help identify each of the characters.
 - Makeup designs in color for each costume, including brands, with choices explained.
 - Fabric choices, fabric swatches, decorations, fastenings, accessories etc explained in terms of authenticity, practicality, artistic & design choices.
 - Theoretical budget for creating the costumes for actual use.
 - Must explain concept, choices, materials, knowledge of play.
 - Must include final design images.



Event S5 ~ Tech Theatre ~ World Court Costumes

IMPORTANT: ALL entries for Character Costumes and World Court Costumes go to room 306 immediately after opening assembly.

WORLD COURT – Room 302

May be for the Aztecs or for any Royal Court that existed during Shakespeare's lifetime.

Varsity Division

School Code	Room	(Order)
CHF S5	302	1
CPK S5	302	2
CTY S5	302	3
CFM S5	302	4
CLA S5	302	5
CEA S5	302	6
CZN S5	302	7

NOTE TO VARSITY JUDGES: If required elements are missing in any section, please lower the score accordingly for that section.


VARSITY DIVISION RULES for WORLD COURT COSTUMES

- 8 minute limit; 1–4 participants.
Must be for one of the featured Shakespeare plays.
Must have all these:
- Concept and Inspiration Board with required information about country, research, time period, setting, and reasons for choices.
 - EITHER CHOICE 1:
 - ▷ 1 fully built costume and 3 color costume renderings, including the fully built one.
 - ▷ Expenditures report for the full realized costume. Expenses not to exceed \$100.
 - ▷ Must have 2 persons of the royal court and 1 person not of the court (tradesperson, peasant, farm worker, etc.)
 - OR CHOICE 2:
 - ▷ 5 color costume renderings.
 - ▷ Must have 2 persons of the royal court and 3 persons not of the court (tradesperson, peasant, farm worker, etc.)
 - Each costume design is identified by country, role at court or job name, and an appropriate personal name for each.
 - Costume designs help identify the role of each person.
 - Makeup designs in color for each costume, including brands, with choices explained.
 - Fabric choices, fabric swatches, decorations, fastenings, accessories etc explained in terms of authenticity, practicality, artistic & design choices.
 - Theoretical budget for creating the costumes for actual use.
 - Must explain concept, choices, materials, knowledge of country and of the people in the designs.
 - Must include final design images.



FYI: More DTASC Rules

- Profanity must be replaced.
- Language found in Shakespeare's plays (i.e., ass, hell, damn, and bastard) is acceptable. "Ass" may not be part of a compound word.
- No scene that demeans or makes a parody of alternative lifestyles, religions, sexual orientation, or culture is allowed.

**Palos Verdes Peninsula
High School
Wishes Everyone at
DTASC
"Fair thoughts
and happy hours
attend on you"**



**Nordhoff
Theatre Arts
salutes the
Shakespeare
Festival**

**Highlanders
rule!**



**Oak Hills
High School**

**Event 3 ~ Audition Monologue
Varsity Division**

Rounds 1 & 2 Rooms 808, 603, 509
Semi-Finals Rooms 808, 603, 509
Finals Room 805

Section 1	Round 1 Order	Round 2 Order	Section 3	Round 1 Order	Round 2 Order
CFM 30	509 1	509 4	CDG 35	808 1	603 7
CAA 30	509 2	603 8	CSF 35	808 2	808 5
CCR 30	509 3	509 11	CTA 30	808 3	603 9
CEA 35	509 4	808 9	CRW 35	808 4	603 5
CTA 35	509 5	808 6	CAN 30	808 5	808 10
CDF 35	509 6	603 11	CHF 35	808 6	509 3
CBQ 30	509 7	808 3	CHA 35	808 7	808 1
CAN 35	509 8	509 8	CAL 35	808 8	509 9
CTY 30	509 9	603 2	CEA 30	808 9	603 1
CEF 30	509 10	509 6	CDF 30	808 10	509 1
CLA 30	509 11	603 4			


Section 2	Round 1 Order	Round 2 Order
CAL 30	603 1	808 7
CHA 30	603 2	509 10
CCR 35	603 3	603 3
CLA 35	603 4	509 7
CHF 30	603 5	603 6
CTY 35	603 6	808 8
CSF 30	603 7	603 10
CDG 30	603 8	808 2
CAA 35	603 9	509 5
CFM 35	603 10	808 4
CRW 30	603 11	509 2

RULES for Audition Monologue:

2 contrasting monologues
5 minute total limit
Both monologues must come from Shakespeare's plays. They may come from the featured plays.
A capella singing is permitted in one of the monologues.
No more than two (2) chairs may be used.

REMINDER TO JUDGES: You can report rules violations, but please do not use them to lower a score.

Cavaliers Rule!



Cleveland High School



Good wishes to everyone!
from
Valencia HS, Valencia



DTASC Company:
We tell stories!
Break a leg!



ATTENTION: 2022 GRADUATES

Looking for money for college?

DTASC HAS SCHOLARSHIPS AVAILABLE FOR ACTORS AND TECHS!

- If you have participated in at least 2 DTASC festivals during HS
- If you have a GPA of at least 2.5
- If you have a Theatre Arts GPA of at least 3.5
- If your Theatre teacher will write a letter of recommendation
- If you complete the online application by May 1

You could be a DTASC scholarship recipient!

MARIO LOMELI SCHOLARSHIP (FOR ACTORS)

Open to high school seniors who have participated in both CETA and DTASC festival acting events.

Same deadlines and audition dates as DTASC Scholarships.

Download the pdf to see requirements for the Lomeli Scholarship.

Applications are at cetoweb.org/dtasc/handbook/
or go to dtasc.org and click the tab for handbook

F1 is the DTASC Scholarship application pdf

F2 is the Mario Lomeli Scholarship application pdf

Event 4 ~ Open History Plays

Varsity Division

Rounds 1 & 2 Rooms 805, 810
 Semi-Finals Rooms 805, 810
 Finals Room 804

Section 4	Round 1 Order	Round 2 Order
CCR 40	805 1	805 5
CBQ 40	805 2	810 5
CLA 40	805 3	810 3
CHF 40	805 4	805 3
CNC 40	805 5	805 2
CRW 40	805 6	810 1

Section 5	Round 1 Order	Round 2 Order
CHA 40	810 1	810 6
CPK 40	810 2	805 6
CRA 40	810 3	805 1
CDG 40	810 4	810 2
CSF 40	810 5	810 4
CTY 40	810 6	805 4

REMINDER TO JUDGES: You can report rules violations, but please do not use them to lower a score.

RULES FOR OPEN HISTORY:

5 minute limit
 2-4 participants
 Must be from one of Shakespeare's history plays.
 Must be a straight scene.
 Must not use the featured plays.

FYI: DTASC Rules for Straight Scenes

Straight scenes must be from a single scene in the play as written by the playwright.

Participants may only edit for the following reasons

- To delete insignificant characters
- To make pronoun changes for clarity
- To remove profanity (required)
- To complete the scene within time constraints.

The playwright's intent must be honored.
 Actors may play more than one role.

Event 5 ~ Open Tragedies

Varsity Division

Rounds 1 & 2 Rooms 504, 802
 Semi-Finals Rooms 504, 802
 Finals Room 908

Section 6	Round 1 Order	Round 2 Order
CEA 50	504 1	504 5
CTY 50	504 2	802 6
CSF 50	504 3	802 7
CLA 50	504 4	504 3
CHF 50	504 5	504 2
CDF 50	504 6	802 4
CNC 50	504 7	802 2

Section 7	Round 1 Order	Round 2 Order
CAN 50	802 1	504 7
CBQ 50	802 2	504 6
CCR 50	802 3	802 5
CHA 50	802 4	802 1
CFM 50	802 5	504 1
CDA 50	802 6	504 4
CPK 50	802 7	802 3

RULES FOR OPEN TRAGEDIES:

5 minute limit
 2-4 participants
 Must be from one of Shakespeare's plays.
 Must not use the featured plays.
 Must be a scene of dramatic intent — no parodies.

REMINDER TO JUDGES: You can report rules violations, but please do not use them to lower a score.

Western Center Academy is delighted to be performing at the Shakespeare Festival



Break a leg, everyone!



Congratulations, DTASC students!

“Act well your part.”

California State Thespians invites your school to join us for our Summer and Fall Leadership Conferences

For info, contact Anthony Robinson @ anthony.j.robinson@gmail.com



Wish Academy High School
 Congratulates
 DTASC
 100 Years
 Celebrating Theater

Event 6 ~ Shakespeare Today: Student Original Update

Varsity Division

Rounds 1 & 2 Room 804
Semi-Finals Room 804
Finals Room 810

Section 8	Round 1 Order	Round 2 Order
CHF 60	804 1	804 7
CLA 60	804 2	804 6
CMA 60	804 3	804 9
CPK 60	804 4	804 8
CHA 60	804 5	804 3
CTY 60	804 6	804 5
CBQ 60	804 7	804 1
CSF 60	804 8	804 2
CDF 60	804 9	804 4

REMINDER TO JUDGES: You can report rules violations, but please do not use them to lower a score.

RULES FOR SHAKESPEARE TODAY:

5 minute limit
2-4 participants
Must be student-written as a modern take (set in 2000 thru 2022) on one of Shakespeare's plays.
May not use the featured plays.
This is not simply a translation of Shakespeare into modern language.
The adaptation does not need to match the tone of the original.
No profanity allowed.



Downey HS

is delighted to perform
at the DTASC
Shakespeare Festival
Break a Leg, everyone!

**Los Angeles
High School
of the Arts**



Event 7 ~ Large Group "Romeo and Juliet"

Varsity Division

Rounds 1 & 2 Rooms 902, 202
Semi-Finals Rooms 902, 202
Finals Room 902

Section 9	Round 1 Order	Round 2 Order
CLA 70	902 1	902 6
CSF 70	902 2	202 6
CHF 70	902 3	202 5
CHA 70	902 4	902 3
CEF 70	902 5	902 1
CFM 70	902 6	202 3

Section 10	Round 1 Order	Round 2 Order
CAN 70	202 1	202 4
CEA 70	202 2	902 4
CPK 70	202 3	902 5
CTY 70	202 4	202 1
CBQ 70	202 5	202 2
CCR 70	202 6	902 2


REMINDER TO JUDGES: You can report rules violations, but please do not use them to lower a score.

RULES for "ROMEO AND JULIET":

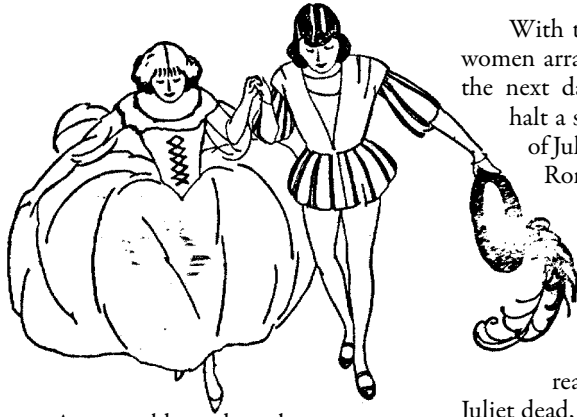
8 minute limit; 3-6 participants
Must be from Shakespeare's "Romeo and Juliet."
Must be a scene of dramatic intent — no parodies.
A synopsis is on page 14.



*Calabasas High
wishes you
"Joy,
gentle friends!"
at the
Shakespeare Festival*



Romeo & Juliet



With the help of Juliet's nurse, the women arrange for the couple to marry the next day, but Romeo's attempt to halt a street fight leads to the death of Juliet's cousin, Tybalt, for which Romeo is banished.

In a desperate attempt to be reunited with Romeo, Juliet follows the Friar's plan and fakes her own death. The message that her death is fake fails to reach Romeo, and believing Juliet dead, he takes his life in her tomb. Juliet wakes to find Romeo's corpse beside her and kills herself.

The grieving families agree to end their feud.

Mostly from <https://www.shakespeare.org.uk/explore-shakespeare/shakespeare/shakespeares-plays/romeo-and-juliet/>

An age-old vendetta between two powerful families in Verona erupts into bloodshed. A group of masked Montagues risk further conflict by gatecrashing a Capulet party.

A young lovesick Romeo Montague falls instantly in love with Juliet Capulet, who is expected to marry her father's choice, Count Paris.



Crescenta Valley High School

A Midsummer Night's Dream

The story of 'A Midsummer Night's Dream' follows several people who all happen to be in love with the wrong person. It's a typical crazy Shakespeare comedy but with a greater than usual dose of magic in it.

You know how Romeo and Juliet is about people who fall in love with the wrong people? And it's a tragedy, so they all die at the end? A Midsummer Night's Dream is like the comedy mirror version of that. Everyone is in love with the wrong person, at least in the beginning, but it's a comedy, so at the end they all get married – which is actually the difference between tragedy and comedy: in a tragedy everyone dies, and in a comedy everyone gets married at the end.

The basic idea of this play is that there are three groups of people who all interact in this forest on one magical night, falling in and out of love and having slapstick adventures. A lot of teen comedies have borrowed this premise.

Group #1 is the Athenians: Hermia, a young woman in love with Lysander, a young man who loves her back, and Helena, who is in love with Demetrius, who is in love with Hermia. Oops. Anyway, that's the romantic setup.

Theseus, Duke of Athens, is preparing for marriage to Hippolyta, the queen of the Amazons, or fighting women. He conquered her people and now he gets to marry her.

Group #2 has the fairies, who are hanging out in the woods: Oberon, their king; Titania, their queen, and Puck, who is currently acting as Oberon's servant. He's also known as 'Robin Goodfellow,' so he's got two names.

Group #3 are known as the "Rude Mechanicals," laborers trying to put on a play. One of them is known as Bottom, who ends up with a donkey's head instead of his own, and Titania pursuing him.

All the action takes place on one magical night, with the four lovers and Titania falling in and out of love according to the machinations of Oberon and Puck.

The Mechanicals get to present their play to Theseus and Hippolyta.

Adapted from Lydia Neptune's synopsis, <https://study.com/academy/lesson/a-midsummer-nights-dream-summary-quotes-and-characters>.

Drawing of Bottom by Gabriela Valero-Arellano, Hesperia HS, 2017

Note from the editor: a drama coach who read this said there are actually four groups. The Lovers and the Athenians should be separate. The Athenians represent order; the Fairies, chaos.



A Midsummer Night's Dream



Event 8 - Group Comedy "A Midsummer Night's Dream"

Varsity Division

Rounds 1 & 2 Rooms 908, Commons
 Semi-Finals Rooms 908, Commons
 Finals Commons

Section 11	Round 1 Order	Round 2 Order
CSF 80	908 1	908 5
CBQ 80	908 2	Cmns 6
CTY 80	908 3	Cmns 4
CHA 80	908 4	908 6
CPK 80	908 5	908 3
CCR 80	908 6	Cmns 2
CDF 80	908 7	Cmns 3

Section 12	Round 1 Order	Round 2 Order
CHF 80	Cmns 1	908 4
CEA 80	Cmns 2	908 7
CFM 80	Cmns 3	Cmns 5
CEF 80	Cmns 4	Cmns 7
CLA 80	Cmns 5	908 2
CDG 80	Cmns 6	908 1
CAN 80	Cmns 7	Cmns 1

**RULES FOR LARGE GROUP COMEDY —
 "A MIDSUMMER NIGHT'S DREAM":**

8 minute limit
 3-6 participants
 Must be from *A Midsummer Night's Dream*.
 Must be a scene that displays humor.
 NOTE: A synopsis of the play is on page 17.

REMINDER TO JUDGES: You can report rules violations, but please do not use them to lower a score.

KAISER
 HIGH
 SCHOOL



WHERE THE
 GREAT
 BECOME
 GREATER

BREAK A
 LEG!



bringing the
 Arts to life

Event 9 - Play by Shakespeare; Music by David Bowie

Varsity Division

Rounds 1 & 2 Theater
 Semi-Finals Theater
 Finals Theater

Section 13	Round 1 Order	Round 2 Order
CLA 90	Thtr 1	Thtr 8
CTY 90	Thtr 2	Thtr 5
CEA 90	Thtr 3	Thtr 7
CSF 90	Thtr 4	Thtr 6
CPK 90	Thtr 5	Thtr 3
CHF 90	Thtr 6	Thtr 2
CBQ 90	Thtr 7	Thtr 1
CHA 90	Thtr 8	Thtr 4

REMINDER TO JUDGES: You can report rules violations, but please do not use them to lower a score.

**RULES FOR PLAY BY SHAKESPEARE;
 MUSIC BY DAVID BOWIE:**

8 minute limit; 3-10 participants
 Must be from any one of Shakespeare's plays, not including featured plays (*Romeo & Juliet*, *Midsummer Night's Dream*).
 All dialogue used must be from the selected Shakespeare play.
 Presented scene must have a story; cannot simply be songs.
 Lyrics may use either Shakespeare's words from the selected Shakespeare play or David Bowie's lyrics.
 All DTASC language rules still apply.
 All musical used must be from David Bowie's recorded material. Bowie's music may be hummed.
 No recorded music may be used.
 No parody — must follow playwright's intent.
 It's a musical — a capella singing is required.
NO MUSICAL ACCOMPANIMENT IS PERMITTED — no iPods, no CDs, no instruments.



Varsity Winners

Event S-1: Set Design

Fifth _____
 Fourth _____
 Third _____
 Second _____
 First _____

Event S-2: Light Design

Fifth _____
 Fourth _____
 Third _____
 Second _____
 First _____

Event S-3: Graphics / Publicity

Fifth _____
 Fourth _____
 Third _____
 Second _____
 First _____

Event S-4: Character Costumes

Fifth _____
 Fourth _____
 Third _____
 Second _____
 First _____

Event S-5: World Court Costumes

Fifth _____
 Fourth _____
 Third _____
 Second _____
 First _____

Event 3: Audition Monologue

Fifth _____
 Fourth _____
 Third _____
 Second _____
 First _____

Event 4: Open History

Fifth _____
 Fourth _____
 Third _____
 Second _____
 First _____

Event 5: Open Tragedy

Fifth _____
 Fourth _____
 Third _____
 Second _____
 First _____

Event 6: Shakespeare Today (Stu. Written)

Fifth _____
 Fourth _____
 Third _____
 Second _____
 First _____

Event 7: Group Tragedy "Romeo & Juliet"

Fifth _____
 Fourth _____
 Third _____
 Second _____
 First _____

Event 8: Group Comedy 'Midsummer'

Fifth _____
 Fourth _____
 Third _____
 Second _____
 First _____

Event 9: Bowie & Shakespeare

Fifth _____
 Fourth _____
 Third _____
 Second _____
 First _____

Sweepstakes

Fifth _____
 Fourth _____
 Third _____
 Second _____
 First _____

Spirit Award _____

STAND UP 4 ARTS (FORMERLY KNOWN AS CALIFORNIA YOUTH IN THEATRE DAY)

*Congrats on your performances/presentations today. 🎉 If you advance to Semifinals today, you are not a graduating senior, and your Theatre teacher will sponsor you, then you could represent your school at the Annual Stand Up 4 Arts in Sacramento next March. You perform for legislators and visit them in their Capitol offices. 🎉 For information, have your teacher contact
Amanda Swann, Chair of Stand Up 4 Arts*



**DTASC Shakespeare Festival 2022
 participants: Congratulations on
 your commitment to the arts**

BROADWAY MELODY TOURS
 213 308 2789
 Quality, Customized New York
 Theatre Tours



DTASC Scholarships

Give the gift of higher education
 and help young artists
 to achieve their dreams.

We believe that a higher education
 should be available to everyone,
 regardless of financial limitations.

With your donation,
 you will be helping high school seniors
 to achieve their college degree in Theatre Arts.

We appreciate your charitable donations in any amount.
 You can donate part of your stipend at festival, or you can
 Donate via PayPal – visit <http://cetoweb.org/dtasc/>
 and click on the Donate button.

Donate